

Gifts ~ Gifts ~ Gifts ~ Gifts ~ Gifts

**NUTCRACKER CARES!**



CAPA is donating proceeds from 2011 weekday student performances to fight child hunger in Contra Costa. Additional donations gratefully accepted: contact [capa@capadance.net](mailto:capa@capadance.net) (Please bring a jar of peanut butter to any show. Donation barrels & envelopes available at all shows)

**Fri Dec 9th 7pm w/Concerto**  
**Sat Dec 10th 2 pm**  
**Sat Dec 10th 7pm w/ Concerto**  
**Sun Dec 11 2pm**

Tickets available online at [www.ShowTix4u.com](http://www.ShowTix4u.com)

(click on California then CAPA Nutcracker)

Campolindo Performing Arts Center

**Gift Baskets for All Occasions**



Lafayette based eCommerce company

**Shop Online Now**

- Christmas
  - Chanukah
  - Holiday Season
  - Corporate
  - For Him / For Her
  - Tea and Coffee
  - Gourmet
  - Sports
- 10% of net profits are donated to local charities that feed and shelter the homeless

[WWW.HOLIDAYHOTDEALZ.COM](http://WWW.HOLIDAYHOTDEALZ.COM)

*Annual Lafayette Gallery Holiday Trunk Show*

December 10th & 11th  
11am - 5pm

Unique Handmade Holiday Gifts By Local Artists



Lafayette Gallery  
50 Lafayette Circle • Lafayette  
925.284.2788 • [www.lafayettegallery.net](http://www.lafayettegallery.net)

**Huckleberry Café-To-Go**

Specialty dishes and desserts... catered to you!

925.324.9620

Present this coupon and receive a free cookie platter with 1st purchase.

[www.futures-explored.org](http://www.futures-explored.org)



**Nifty Thrift Shop**

**Clothing & Collectibles**

3467 Golden Gate Way, Lafayette

Mon 12pm-5pm, Tues-Sat 10am-5pm

Donations accepted Mon-Sat 9am-4pm

925.284.5237

**Lots of Trees in Lamorinda**

... continued from page B5

Small Scotch pine trees (2 to 4 feet) are \$25; Grand firs (6 to 8 feet) are \$70 to \$90; Douglas firs (5 to 9 feet) cost \$40 to \$90 and Noble firs (2 to 10 feet) are \$22 to \$160. Christmas wreaths decorated by troop parents are also available. There's free hot cocoa, and Lamorinda seniors get free local delivery. A portion of each tree sale is tax-deductible. The lot is open 9 a.m. to 9 p.m. through December 20 or until trees sell out.

Bob Holland, of **Bob's Christmas Trees**, has sold trees in Moraga for 36 years from a corner lot at School Street and Moraga Way. He hires local high school students to work and marvels that one such employee has returned yearly "for the last 15 to 18 years." Holland's trees are mostly from Oregon; he sells a selection of Noble fir, Douglas fir,

Grand firs, Nordman (a cross-bred tree) plus "a few Silvertip". Trees are 3 to 10 feet tall and prices start at \$15. Wreaths and flocking is available. The retired Oakland policeman keeps flexible lot hours, usually from 9 a.m. to 6 p.m. Holland says the first two weekends in December are critical to sales, but notes a few traditionalists wait until Christmas Eve to buy their tree. He says he'll be there then. Holland travels the country on an over-70 senior softball team the rest of the year.

**Joe's Quality Christmas Trees** is across from the gazebo on Mt. Diablo Blvd. in Lafayette for a second year. Joe Natina and his brother-in-law Steve Sewell bring in Oregon Silvertips and Noble firs, and price them from \$15 to \$17 per foot (Silvertips) and \$10 to \$13 per foot

(Noble). Grand firs will be available shortly. The trees arrive weekly in small shipments to keep them fresh. Custom wreaths are available and children can make their own mistletoe decorations. Lot hours are 9 a.m. to 9 p.m. daily through December 24.

Some local nurseries, a hardware store, a drug store and one grocery store also sell full size trees. **Lafayette's Ace Hardware, Moraga Hardware and Lumber and Orinda True Value Hardware** do not, but they do offer tree lights and accessories. Moraga Ace Hardware is also a participant in the Lights for Life cancer fundraiser (<http://www.lightsforlifeinc.com/>), and Orinda Hardware has a model train display the kid in everyone should enjoy. Orinda's **Rite Aid** sells cut trees.



Honey Bear Trees proprietor J.R. Bierly (left) and Tommy Beritzhoff Photo Cathy Dausman

**Orchard Supply Hardware** in Moraga sells wreaths, garlands, cones and stands plus Douglas, Noble and Grand fir trees, from 5 to 9 feet tall. Prices range from \$21.99 to \$74.99, and "elf trees" are \$18.99. **Orchard Nursery** stocks Nordman, Noble and Silvertip trees in heights to 14 feet. Price quotes were unavailable by phone. Orchard Nursery also carries wreaths and greens and features a store display of 63 decorated trees.

stocks some live trees plus 2 to 12 foot tall cut Noble firs from Washington. Tree prices (\$20 to \$350) include free home delivery and setup. McDonnell suggests buying a tree bag for easy cleanup. They will also spray trees with fire retardant (a requirement for trees in public spaces) for \$6/foot. Lafayette's **Whole Foods** carries sustainably-harvested Noble firs from Oregon and Washington in 6 to 7 foot height, for \$39.99 while supplies last.

Orinda's **McDonnell Nursery**

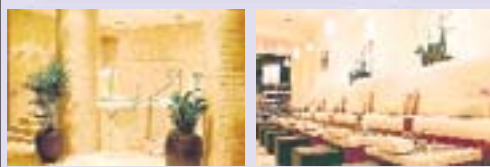
**Lavande Gift Cards for the Holidays**

Voted "Best Of" by Lamorinda Moms, San Jose Mercury News, Metro, San Francisco Magazine

Gift \$27  
Signature Pedicure  
Nail Care, Exfoliation, Massage, and Polish

Gift \$55  
50 min Massage Special Swedish or Deep Tissue. Purchase of 2 required

**We Have Gift Cards**  
Offers expires 2/28/2012



3589 Mt. Diablo Blvd. Lafayette  
925-299-8877

Open Daily 10am-7pm, except Thanksgiving, X'mas, and New Year Day



Manicure - Pedicure - Massage - Facial - Waxing

**Holiday Gem Jewelry & Gift Show**

December 9-11, 2011 (Fri-Sun)

Alameda County Fairgrounds - Building P-4501 Pleasanton Ave. Pleasanton, CA 94566

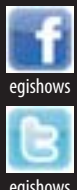
FREE ADMISSION

CASH & CARRY



**This weekend!**

**EGI Gem & Jewelry Show**  
[WWW.EGISHOWS.COM](http://WWW.EGISHOWS.COM)



Show Hours:  
Fri-Sat 10:00 a.m. - 6:00 p.m.  
Sun 10:00 a.m. - 4:00 p.m.  
- Bring this ad and receive a gift while it last  
- Daily gift certificate drawing for the first 100 attendees (Gift certificate only applied towards the purchase during the show)  
- Wholesale open to public

**Tree Shopping: the Basics**

Local Stores offering cut Christmas trees:

- McDonnell Nursery, Orinda (925) 254-3713
- Orchard Nursery, Lafayette (925) 284-4474
- Orchard Supply Hardware, Moraga (925) 377-0994
- Rite Aid, Orinda (925) 253-1904
- Whole Foods, Lafayette (925) 284-5305

**Seasonal Lots:**

**Sue Renno's, Lafayette**

Las Trampas Pool parking lot, St. Mary's at Glenside  
Hours: 10 a.m. to 8 p.m. daily  
Extras: candy canes, also sell Boy Scout wreaths  
Trees: Noble Firs only  
Price: \$60 to \$105, depending on size

**Honey Bear Trees, Lafayette**

Near Acalanes High School, Deer Hill at Pleasant Hill  
Hours: 9 a.m. to 9 p.m. daily  
Extras: Santa Claus visits Dec. 10 & 11, 10 a.m. to 6 p.m.  
Trees: Noble Firs, Doug Firs and Frasers  
Price: \$21 to \$300, depending on size and type

**Boy Scout Troop 224, Lafayette**

Mt. Diablo Boulevard at Risa Road  
Hours: 9 a.m. to 9 p.m.; closed after Dec. 20  
Extras: wreaths available, free hot chocolate, free senior delivery  
Trees: Noble Fir, Grand Fir, Doug Fir and Scotch pine  
Price: \$22 and up, depending on size and type

**Bob's Tree Lot, Moraga**

School Street at Moraga Way  
Hours: flexible. Generally 9 a.m. to 6 p.m.  
Extras: flocking available  
Trees: Noble, Doug, Grand, Nordman and a few Silvertip  
Price: starting at \$15

**Joe's Quality Christmas Trees, Lafayette**

Across from the Gazebo on Mt. Diablo Blvd.  
Hours: 9 a.m. to 9 p.m.  
Extras: wreaths available; children can make mistletoe decorations  
Trees: Silvertip, Noble; Grand firs coming soon  
Price: \$10 to \$17 per foot

It's Beginning to Look a Lot Like Christmas!