



An oversized ottoman does double duty as a place for snacks and extra seating in a pinch.

Don't be afraid to mix metals. Layering brass, silver, and even chrome can add interest and keep everything from looking too staged.

You don't need to match your art to your room. Fewer things in design can drive me over the edge more than when I see homeowners match the art colors to their furnishings and fabrics. It reminds me of a Starbucks where the quaint coffee posters pick up every tone and hue of the flooring, walls and banquette seating. Your home isn't a corporate logo, so stop matching! The eye needs to travel, and a room needs visual tension to keep it interesting. Mix it up. Vary the lighting. I've said this before, but it deserves repeating. Every room needs three kinds of lighting: general light (recessed cans), accent lighting (to highlight art or a specific view) and task lighting (for reading and to keep light at eye level where it's more flattering on the face.)

And please, everything on dimmers. Your guests will thank you.

Brandon Neff is a Bay Area based Interior Designer. He can be reached at BrandonNeffDesign.com or at brandonneffdesign@yahoo.com.



DUDUM REAL ESTATE GROUP *Distinctive Properties*

In **GRATITUDE** *for all the trust, support and referrals this year. Thanks and Happy Thanksgiving.*



660 LOS PALOS DRIVE
5 BR/4 bath modern craftsman in Burton Valley sold in 10 days with 3 offers over asking at \$1,775,000.



566 SANTA MARIA WAY
4 BR- 3 bath traditional rancher in the Trail Neighborhood sold in 7 days with three offers over the asking price at \$1,000,000.



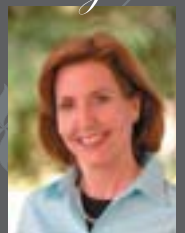
1706 JEANNE CIRCLE
Pleasant Hill Border Executive Style home with 4 BR-3 baths sold in 10 days, listed for \$799,000
NOW PENDING

Distinction in the Market Place Is Key...



DUDUM
REAL ESTATE GROUP

JANE SMITH
Realtor® | BRE# 01476506
925.998.1914
jane@janesmithhomes.com



"JANE SMITH IS #1 IN SERVICE & QUALITY IN LAMORINDA" *
Happy Client via YELP*