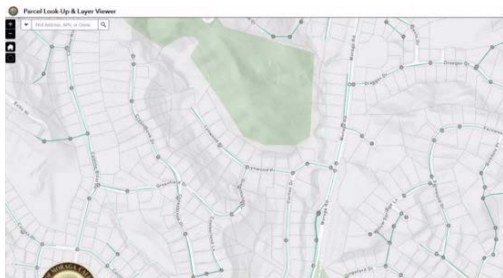


Published September 18th, 2019

## Geographic Information System halfway to completion

By Vera Kochan



Example of GIS Storm Drain mapping and manhole covers for use by public works

and infrastructure information to town staff and the community while building on layers from public works and the planning departments.

Some of the data layers currently available through the system are: land parcels; zoning; general plan use, emergency routes; roads; traffic collisions, scenic corridors; parks and trails; ADA ramps; earthquake faults; landslides; wildfire threats and more.

The GIS provides for the layering of information, which will help the town make decisions, increasing efficiency and transparency, because much of the information will be easily available to residents. However, for security and privacy reasons, not every aspect will be available to the public.

Advantages to town staff and the public are the web-based tools to access the town's data, such as property information, map printing, overlay data, ability to place comments and run queries, conduct analysis and export data.

Residents will be able to access the GIS by going to the town's website home page and clicking onto the GIS/Mapping Tool located under Quick Links.

While the project has reached the halfway mark, yet to come is staff training for utilization purposes, the planning projects public application, the public works public application and a development of a maintenance plan to ensure data and applications are kept up to date.

Council Member Steve Woehleke was concerned about cybercrimes and how the system will be protected from either being erased or from unauthorized access. It was explained that the system is housed on Esri, an international supplier of GIS software widely recognized for keeping their sites secure.

Reach the reporter at: [vera@lamorindaweekly.com](mailto:vera@lamorindaweekly.com)

[back](#)

Copyright © Lamorinda Weekly, Moraga CA