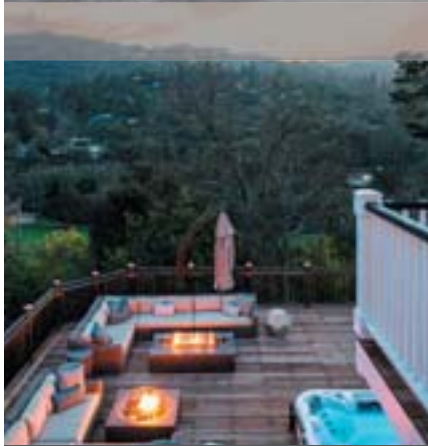




# *New with a view in* **ORINDA COUNTRY CLUB**



## *21 El Patio, Orinda*

A beautifully re-built 2013 custom home by McKenzie Gray Builders at the end of a private cul de sac where California coastal meets New England Colonial. 180-degree views overlook the Orinda Country Club golf course and the Berkeley Hills. Here exceptional quality build, thoughtful design and timeless craftsmanship offer a move-in ready luxury home in the heart of Orinda.

*Private Cul de Sac with 180 degree Views. Call for price*

<b>5</b> <i>Bed</i>	<b>4</b> <i>Full Bath</i>	<b>2</b> <i>Half Bath</i>	<b>.43</b> <i>Acre</i>
<b>±4,455</b> <i>Sq ft</i>	<b>1</b> <i>Office</i>	<b>2</b> <i>Laundry</i>	<b>100%</b> <i>Awesome</i>

Amy Rose Smith  
Village Associates  
925.212.3897  
amy@amyrosesmith.com  
www.amyrosesmith.com  
CalBRE: #01855959



FINDING THE *Right* FIT



AMYROSESMITH

villageassociates.com | @villageassociates



925.254.0505 | **It's Village. Of Course.**

